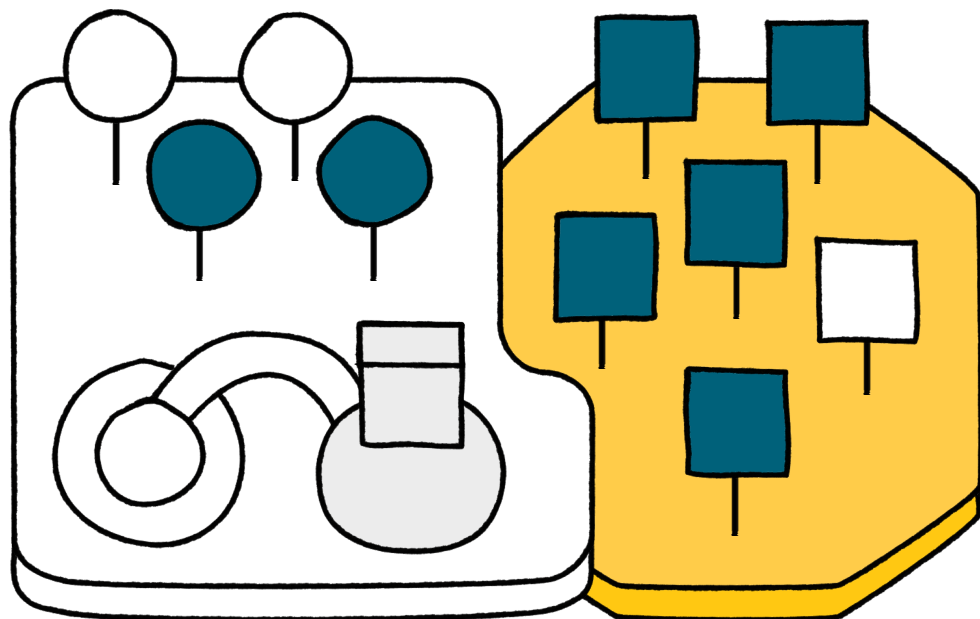


## 07 Bern

### Brünnen school outside space design



#### Time frame

May 2014 – June 2017

#### Stakeholders

Political executive  
Formal education  
Government builders  
Landscape architects  
Architects

#### Typologies (space types)

Outside space



#### Institutional framework



#### Design quality criteria

Designability  
Opportunities to interact



#### Structure-related quality criteria

Strategic orientation  
Designing the provisions/  
living spaces  
Collaboration  
Coordination  
Participation and identification

#### The starting point

For the construction of the new school in Brünnen, the school heads and the project managers of Hochbau Stadt Bern wanted to involve pupils in some aspects of planning and implementing the inside and outside areas. A concept was created in collaboration with KINDERBÜRO Bern and Bern's urban green space department. Following feedback from the teachers in February 2015, the children's participation was focused on the outside area.

#### Aims

Children's participation in designing the outside space for the younger classes and in the structural implementation of the sand-water-stone area.

#### Target group

Pupils from the younger classes (4–7 years old) of Brünnen school

#### Costs

240 working hours across the entire process

### **Project progression**

May 2014 – June 2017  
(initial meeting to inauguration)

The design of the outside space for the younger classes was already completely planned before the initial meeting. The level of design freedom was determined to be too limited to count as participation by the participation officers. The project manager rectified this by redefining the level of design freedom. This meant the participation process could be organised and carried out in two phases: needs analysis using model construction and a “get involved” half day when implementing the sand-water-stone area.

### **Success factors**

- Political will for children’s participation.
- Interdisciplinary collaboration between planners, school and participation officers.
- Time and financial resources for planning and implementing the participation process.
- Age-appropriate method.
- Transfer of the needs analysis as part of a discussion with the project manager (specific structural elements and atmospheric components to promote play experiences).

### **Challenges**

- Communication between the participating parties
- Taking children’s feedback seriously
- Openness of the architects to include the ideas in their plans where possible.

### **Contact details**

Helen Gauderon  
Fachstelle DOK Impuls  
[www.spieleninbern.ch](http://www.spieleninbern.ch)  
Tel. + 41 (0)31 332 16 60